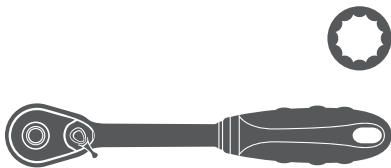


## Parts List

7	Hex head cap screw, M8
7	Flat washer, M8
7	Lock washer, M8
1	Bracket, #4510

## Tools Required

Ratchet	Socket, 13mm
---------	--------------



## Level of Difficulty

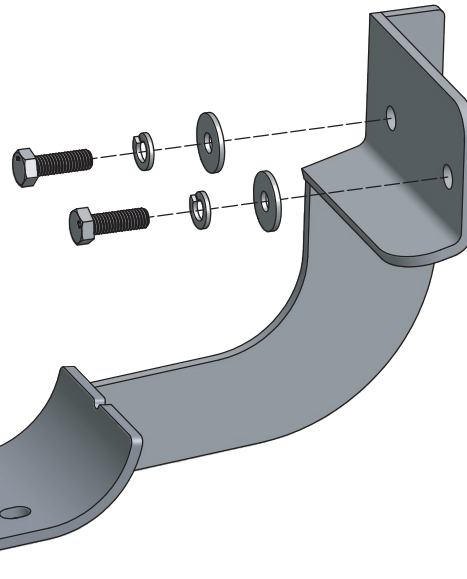
Easy



Scan  
for helpful  
install tips

## Hardware

Hex head  
cap screw, M8  
Lock washer, M8  
Flat washer, M8



## Step 1

Replace the standard driver side front bracket with the new 4510 bracket.

Attach new bracket with the supplied 8mm hardware at locations 1 and 2.

**Note:** Additional 8mm hardware has been provided for the remaining five bracket locations in the event that the vehicle has been equipped with threads in the lower mounting position.

**Note:** Only one 8mm Fastener will be required for the five remaining bracket locations. The standard 12mm bolt plate will be used to secure only the top of the standard brackets.

